



THE DEPOT FOUNDATION
in support of arts and culture
 ENJOY THE MAGIC. SUPPORT THE SPIRIT.

SPRING 2003

Expressions

THE DEPOT FOUNDATION



PAGE
2



PAGE
3

ARTS AND
CULTURE
AWARDS

PAGE
4



ENSURING A LASTING HOME FOR THE ARTS



The Duluth arts and cultural community currently is in crisis. The headlines may be overstated, but quite properly there is concern throughout the community about the Depot's problems and the future of the Depot as an arts and culture center. At the core is the question of who will direct, manage and support the wonderful facility that provides a home for our regional arts and cultural organizations.

The situation is complex and it involves many parties, but the county — the building's owner —

has the ultimate decision. The county would like to see the facility continue as an arts and culture center and has called on each participating member organization, the Depot Foundation and the city to work towards sustaining the facility. The process may take a while, but the resolve to create a better structure for the Depot is shared by all.

Each of the member organizations has a vital role in sustaining the facility. They must keep themselves viable, no easy task in these days of stretched budgets, low investment returns and declining governmental support. And each organization must have an attitude of cooperation for the good of the whole. That was a founding premise for the Depot and it is needed now more than ever.

What is the Depot Foundation's role in sustaining the Depot? The Foundation provides grant funding in response to capital needs and programmatic initiatives. Foundation Chair Craft Dryer stated in letters to the city and county that we are committed to our mission and are planning to continue it for generations. In a meeting with the county and the city, we reiterated the Foundation's commitment and clearly stated that we can only fund viable organizations. The Foundation has a fiduciary responsibility to its contributors to support arts and cultural organizations, the Depot included, which are well managed and meet their missions.

Home for the Arts, cont. on page 4

UP FRONT

A TIME TO TALK

SANDY HOFF, DEVELOPMENT COMMITTEE CHAIR



The Depot Foundation highly values member concerns about the future of arts and culture in our community. That's why we're initiating a series of coffees and teas this spring to share information and gather input.

We know you have a keen interest in the arts and believe strongly in the value of arts and cultural programming for the enrichment of our region. We'd like to know more about the priorities you have and the ways in which you

think they should be supported.

And we'd like to discuss the Depot Foundation's role and our plans to continue supporting the arts and cultural community with you.

Foundation directors will be present at these informational gatherings to answer your questions.

Please join us for conversation and a cup of your favorite beverage. Directors Caroline Bye, Laura Budd and Carolyn Sundquist have graciously offered their homes to host the events. If you have an interest and would like to attend, please call the Foundation office at 218.279.9913. [df](#)

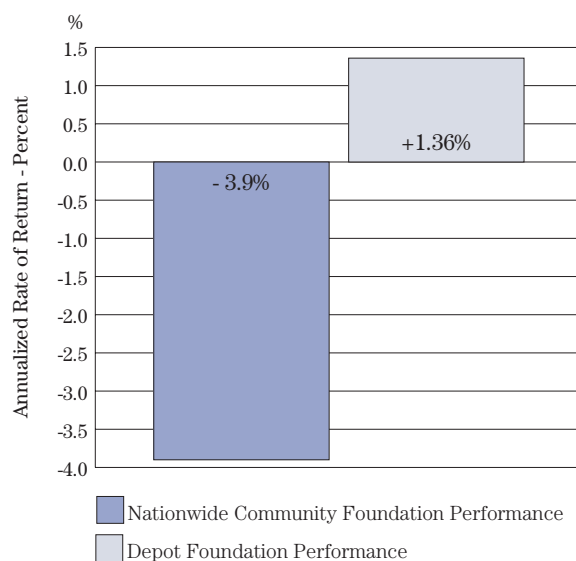
DEPOT FOUNDATION INVESTMENTS

Out-Perform Community Foundations Nationwide

The 2001 Investment Performance and Practices of Community Foundation's National Report states the median annualized rates of return average for year ending December 31, 2001, was -3.9 percent. The Depot Foundation's rate of return on investments for the same period was +1.36 percent.

We tip our hat to the Foundation's Finance and Investment Committee: Allan Apter, John Bell, D. Kelly Campbell, R. Craft Dryer, Ann Fryberger, Bob Fryberger, Pat Oswald, Carolyn Sundquist and the investment managers Robert Howe and Jane Gottwald, North Shore Investments and Trust.

The 2002 report will be published in August. [df](#)



MISSION STATEMENT

The Depot Foundation is dedicated to the preservation and presentation of the arts, culture and history of the region. We do this through the development and management of endowment assets and distribution of endowment fund earnings primarily to the St. Louis County Heritage and Arts Center and the participating member organizations.

GRANT SUPPORTS YOUNG PEOPLE'S CONCERT

A Depot Foundation grant from the undesignated fund enabled 4,100 area 4th and 5th graders to attend a special performance by the Duluth-Superior Symphony (DSSO) and the DSSO Youth Orchestra. The "Young People's Concert" was held at the Duluth Entertainment and Convention Center on March 27, 2003.

"These Young People's Concerts are designed to introduce elementary-aged children to the world of classical music," Andrew Berryhill stated in the DSSO's grant request. "Previously sponsored wholly by another corporation, this year's supporting grant was one-third the previous year's level, leaving the DSSO in danger of needing to cancel these valuable educational opportunities for children." *df*



Members of the Duluth-Superior Symphony Youth Orchestra played with the DSSO at its annual Young People's Concert on March 27, 2003.



Ryan Rapsys, a student at University of Minnesota-Duluth, was selected as the winner of the James and Paula Nelson Young Composers Competition with his composition *Modicum-2-1202*. The piece debuted at the DSSO's Young People's Concert on March 27, 2003. Rapsys (left) is pictured here with DSSO Music Director Markand Thakar (center) and Depot Foundation Executive Director Carla Charlton (right).

DEPOT FOUNDATION AWARDS \$3,800 IN GRANTS

The Depot Foundation Board of Directors is pleased to announce the awarding of \$3,800 in grants from the Prindle/Wood Family Memorial Endowment to support programmatic needs.

Arrowhead Chorale was awarded a \$1,000 grant to support the Spring 2003 *Mass in B Minor* concert.

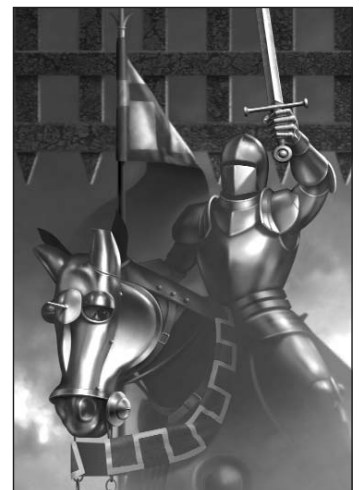
The **Duluth Art Institute** was awarded a \$1,000 grant to support the exhibit *Russian Odyssey: The Life and Times of Ivan Djeneeff* and the piloting of the docent gallery guide program.

The **Duluth Playhouse** was awarded a \$1,000 grant to support a fight choreographer to teach children techniques to stage battle scenes in the Duluth Playhouse Children's Theater

production of *The Lion, The Witch, and The Wardrobe*, a story of a magical kingdom where great kings prevail.

Matinee Musicale was awarded an \$800 grant to support the performance of *Musica Vitae* with Per Tengstrand, pianist, a collaborative project of Matinee Musicale and the Duluth Sister Cities Commission.

The Prindle/Wood Family Memorial Endowment was established by Cornelius Wood, Jr., to honor two of his ancestors, early Duluth settlers William Martin Prindle and his wife Mina Merrill Prindle. For information on how to establish an endowment to support our arts and cultural community, please contact The Depot Foundation at 218.279.9913. *df*





THE DEPOT FOUNDATION

314 WEST SUPERIOR STREET, SUITE 10
DULUTH, MN 55802

218.279.9913 FAX 218.279.9914
DepotFoundation.org

NONPROFIT ORG
US POSTAGE
PAID
DULUTH MN
PERMIT NO 721

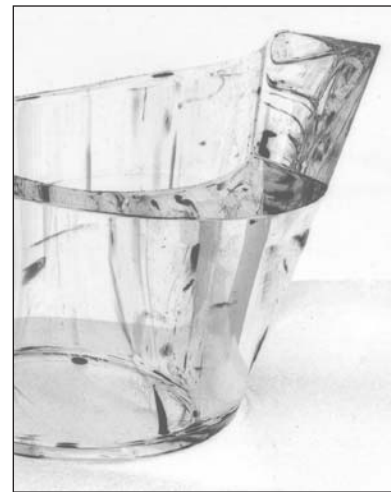
DATE SET FOR 4th ANNUAL ARTS AND CULTURE AWARDS

This year's Depot Foundation Arts and Culture Awards will be presented Thursday, September 11, 2003, during the Circle of Friends Dinner. The annual awards honor individuals and organizations that make a valuable difference through their contributions to the region's premier arts and cultural community. Awards will be presented in three categories:

The Depot Foundation's Arts and Culture Initiative Award recognizes those individuals or organizations demonstrating exemplary initiative in creating opportunities in or expanding access to the arts and culture of our region.

The Depot Foundation's Arts and Culture Community Enrichment Award recognizes bold steps taken by individuals or organizations in strengthening the arts and culture of our region.

The Depot Foundation's Arts and Culture Lifetime Achievement Award recognizes an individual or organization for their lifetime contribution to the arts and culture of our region. [df](#)



Home for the Arts, from page 1

The Depot Foundation has invested millions of dollars in the Depot building over the past 23 years. The Depot Foundation believes in the importance of the facility as a home for our regional arts and cultural community and has supported the building with grant awards for capital projects. However, the Foundation has never owned nor managed the building, and the decision making process for the Depot's future requires the work of governments and many others. The Foundation expects to be a resource and participant in the process.

It is the Depot Foundation's hope that the county will make short-term arrangements to keep the Depot operating for the current season. This will give needed time — time for the county and all associated with the facility to determine the long-term vision for the facility and the organizational structure that will support and sustain it. [df](#)

THANK YOU, SPONSORS!

A & L Properties, Agnew Dryer Storaasli Knutson Pommerville, Ltd., Arco Coffee, College of St. Scholastica, Computer Renaissance, Enbridge Energy, Engwall Florist & Greenhouse, Johnson Insurance Consultants, Lakewalk Surgery Center, Kirby Student Center University of Minnesota Duluth, M & I Bank, Minnesota Power — an Allete Company, North Shore Investments & Trust, Northland Gastroenterology, P.A., and Security Jewelers.



Help sponsor Depot Foundation publications and activities. Call 218.279.9913 for more information.